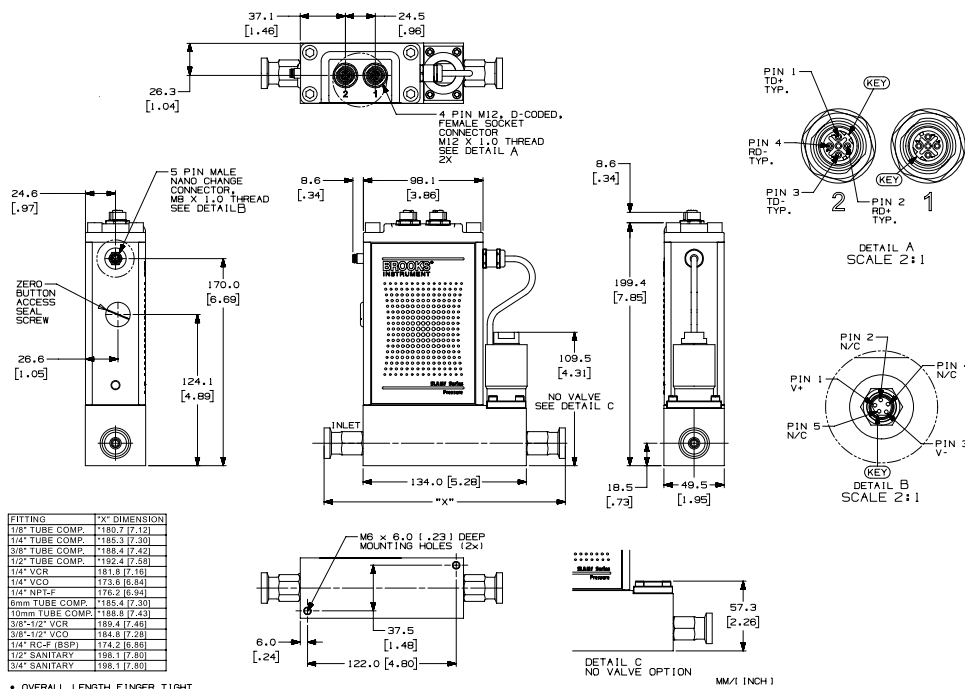
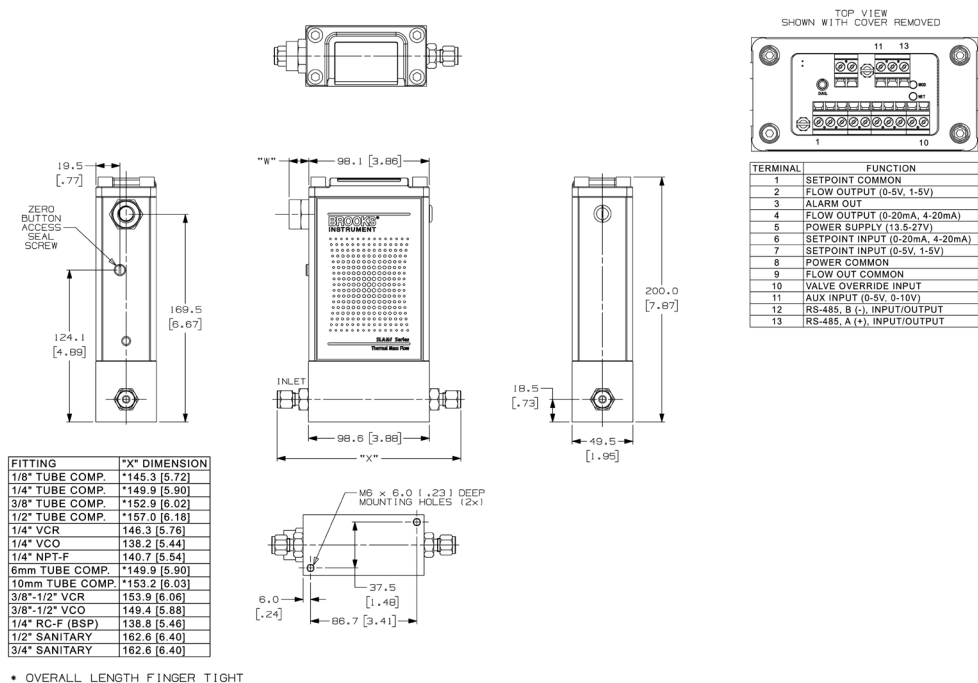


SLAMf50, EtherNet/IP & PROFINET



Best.-Nr.: SLAMf50031B

SLAMf60, Analog/RS485



Best.-Nr.: SLAMf60031B

* Der Aux-Eingang wird nur für ferngesteuerte Druckregler verwendet.
Weitere Konfigurationen finden Sie in der Bedienungsanleitung.

SLAMf51, DeviceNet

1111111111

1111111111

1111111111

1111111111

1111111111

1111111111

1111111111

1111111111

1111111111

1111111111

1111111111

1111111111

1111111111

1111111111

1111111111

1111111111

1111111111

1111111111

1111111111

1111111111

1111111111

1111111111

1111111111

1111111111

1111111111

1111111111

1111111111

1111111111

1111111111

1111111111

1111111111

1111111111

1111111111

1111111111

1111111111

1111111111

1111111111

1111111111

1111111111

1111111111

1111111111

1111111111

1111111111

1111111111

1111111111

1111111111

1111111111

1111111111

1111111111

1111111111

1111111111

1111111111

1111111111

1111111111

1111111111

1111111111

1111111111

1111111111

1111111111

1111111111

1111111111

1111111111

1111111111

1111111111

1111111111

1111111111

1111111111

1111111111

1111111111

1111111111

1111111111

1111111111

1111111111

1111111111

1111111111

1111111111

1111111111

1111111111

1111111111

1111111111

1111111111

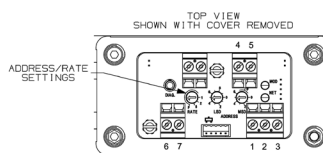
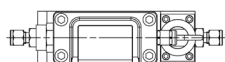
1111111111

1111111111

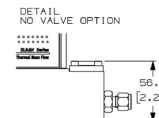
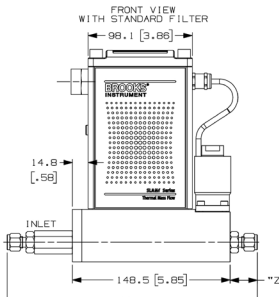
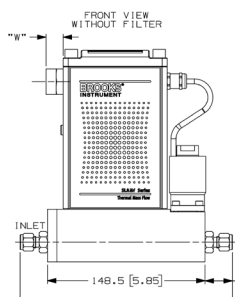
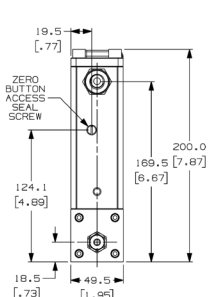
1111111111

1111111111

1111111111



TERMINAL	FUNCTION
1	DRAIN
2	POWER SUPPLY (11-25V)
3	POWER COMMON
4	CAN H
5	CAN L
6	AUX COMMON
7	AUX INPUT (0-5V, 0-10V)



FITTING	"X" DIMENSION (Without Standard Filter)	"Y" DIMENSION (With Standard Filter)	"Z" DIMENSION
9/16"-1/8 UNF	149.5 [5.85]	184.5 [7.26]	N/A
1/4" TUBE COMP.	•199.8 [7.87]	•239.8 [9.29]	•25.7 [1.01]
3/8" TUBE COMP.	•202.9 [7.99]	•238.8 [9.40]	•27.2 [1.07]
1/2" TUBE COMP.	•206.9 [8.15]	•242.9 [9.56]	•29.2 [1.15]
1/4" VCR	196.3 [7.73]	232.2 [9.14]	23.9 [0.94]
1/4" VCO	188.1 [7.41]	224.1 [8.82]	19.8 [0.79]
1/4" NPT	190.7 [7.51]	226.7 [8.92]	21.1 [0.83]
6mm TUBE COMP.	•199.9 [7.87]	•235.8 [9.28]	•25.7 [1.01]
10mm TUBE COMP.	•203.3 [8.00]	•239.4 [9.42]	•27.4 [1.08]
3/8"-1/2" VCR	203.9 [8.03]	239.9 [9.44]	27.7 [1.09]
3/8"-1/2" VCO	199.3 [7.85]	235.3 [9.26]	25.4 [1.00]
1/4" RC (BSP)	188.7 [7.43]	224.6 [8.84]	20.1 [0.79]
1/2" SANITARY	212.6 [8.37]	N/A	32 [1.26]
3/4" SANITARY	212.6 [8.37]	N/A	32 [1.26]

• OVERALL LENGTH FINGER TIGHT

Best-Nr.: SLAMf51033B

SLAMf61, Analog/RS485

1111111111

1111111111

1111111111

1111111111

1111111111

1111111111

1111111111

1111111111

1111111111

1111111111

1111111111

1111111111

1111111111

1111111111

1111111111

1111111111

1111111111

1111111111

1111111111

1111111111

1111111111

1111111111

1111111111

1111111111

1111111111

1111111111

1111111111

1111111111

1111111111

1111111111

1111111111

1111111111

1111111111

1111111111

1111111111

1111111111

1111111111

1111111111

1111111111

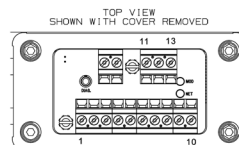
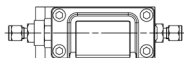
1111111111

1111111111

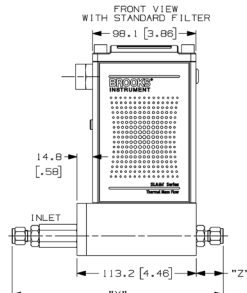
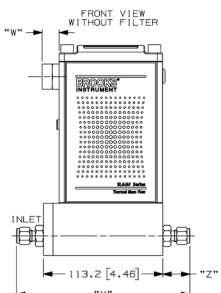
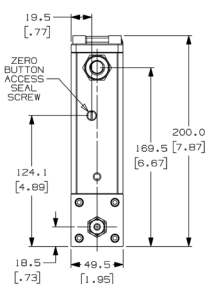
1111111111

1111111111

1111111111



TERMINAL	FUNCTION
1	SETPOINT COMMON
2	FLOW OUTPUT (0-5V, 1-5V)
3	ALARM OUT
4	FLOW OUTPUT (0-20mA, 4-20mA)
5	POWER SUPPLY (13.5-27V)
6	SETPOINT INPUT (0-20mA, 4-20mA)
7	SETPOINT INPUT (0-5V, 1-5V)
8	POWER COMMON
9	FLOW OUT COMMON
10	VALVE OVERRIDE INPUT
11	AUX INPUT (0-5V, 0-10V)
12	RS-485, B (-), INPUT/OUTPUT
13	RS-485, A (+), INPUT/OUTPUT



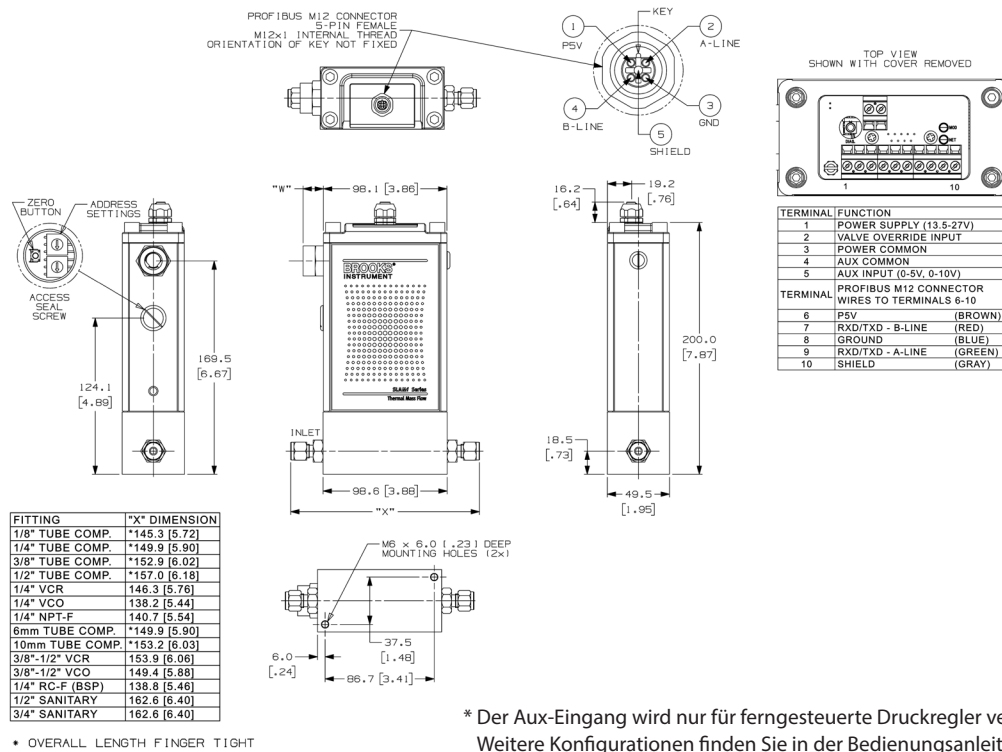
FITTING	"X" DIMENSION (Without Standard Filter)	"Y" DIMENSION (With Standard Filter)	"Z" DIMENSION
9/16"-1/8 UNF	113.2 [4.46]	149.2 [5.87]	N/A
1/4" TUBE COMP.	•184.5 [8.48]	•209.4 [8.24]	•25.7 [1.01]
3/8" TUBE COMP.	•187.6 [8.60]	•212.5 [8.36]	•27.2 [1.07]
1/2" TUBE COMP.	•171.6 [8.78]	•216.5 [8.52]	•29.2 [1.15]
1/4" VCR	161.0 [8.34]	205.9 [8.10]	23.9 [0.94]
1/4" VCO	152.9 [8.02]	197.7 [7.78]	19.8 [0.78]
1/4" NPT	153.4 [8.04]	200.3 [7.89]	21.1 [0.83]
6mm TUBE COMP.	•184.6 [8.48]	•209.5 [8.25]	•25.7 [1.01]
10mm TUBE COMP.	•187.9 [8.61]	•212.9 [8.38]	•27.4 [1.08]
3/8"-1/2" VCR	188.7 [8.64]	213.5 [8.40]	27.7 [1.09]
3/8"-1/2" VCO	184.1 [8.46]	208.9 [8.22]	25.4 [1.00]
1/4" RC (BSP)	153.4 [8.04]	198.3 [7.81]	20.1 [0.79]
1/2" SANITARY	177.3 [8.98]	N/A	32 [1.26]
3/4" SANITARY	177.3 [8.98]	N/A	32 [1.26]

• OVERALL LENGTH FINGER TIGHT

Best-Nr.: SLAMf51031C*

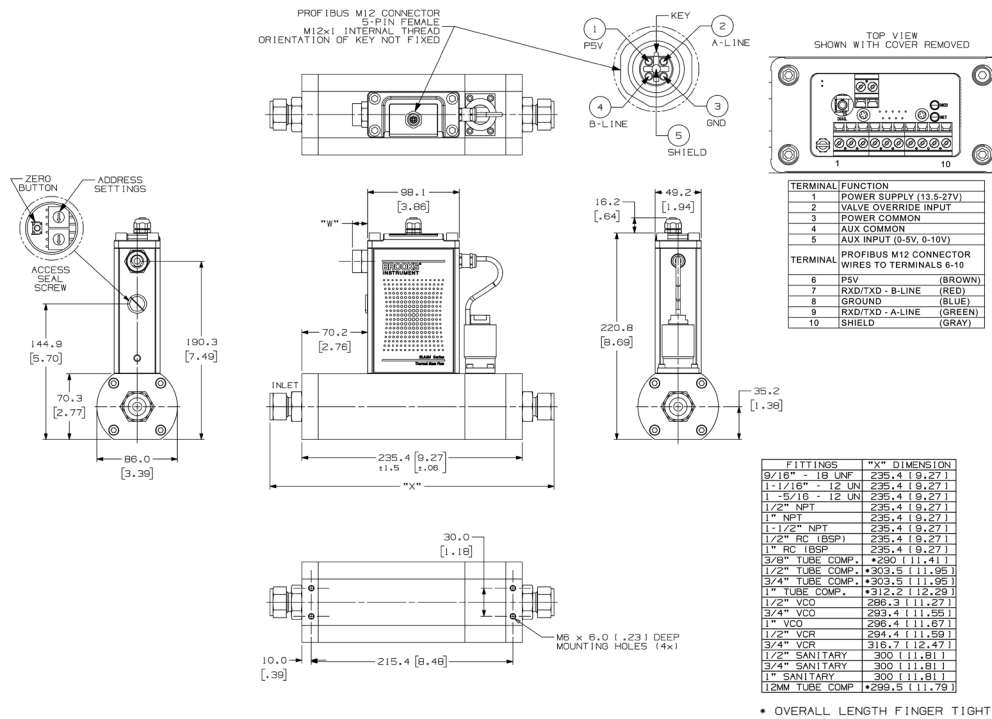
* Der Aux-Eingang wird nur für ferngesteuerte Druckregler verwendet.
Weitere Konfigurationen finden Sie in der Bedienungsanleitung.

SLAMf60, Profibus



Best.-Nr.: SLAMf60032C *

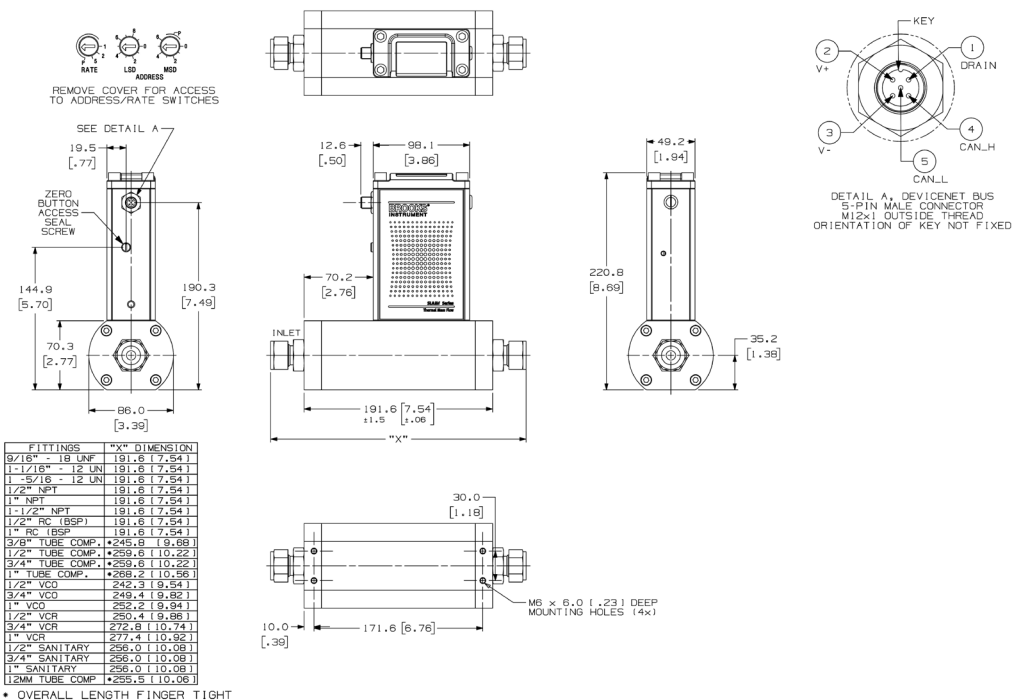
SLAMf53, Profibus



Best.-Nr.: SLAMf53032D *

* Der Aux-Eingang wird nur für ferngesteuerte Druckregler verwendet. Weitere Konfigurationen finden Sie in der Bedienungsanleitung.

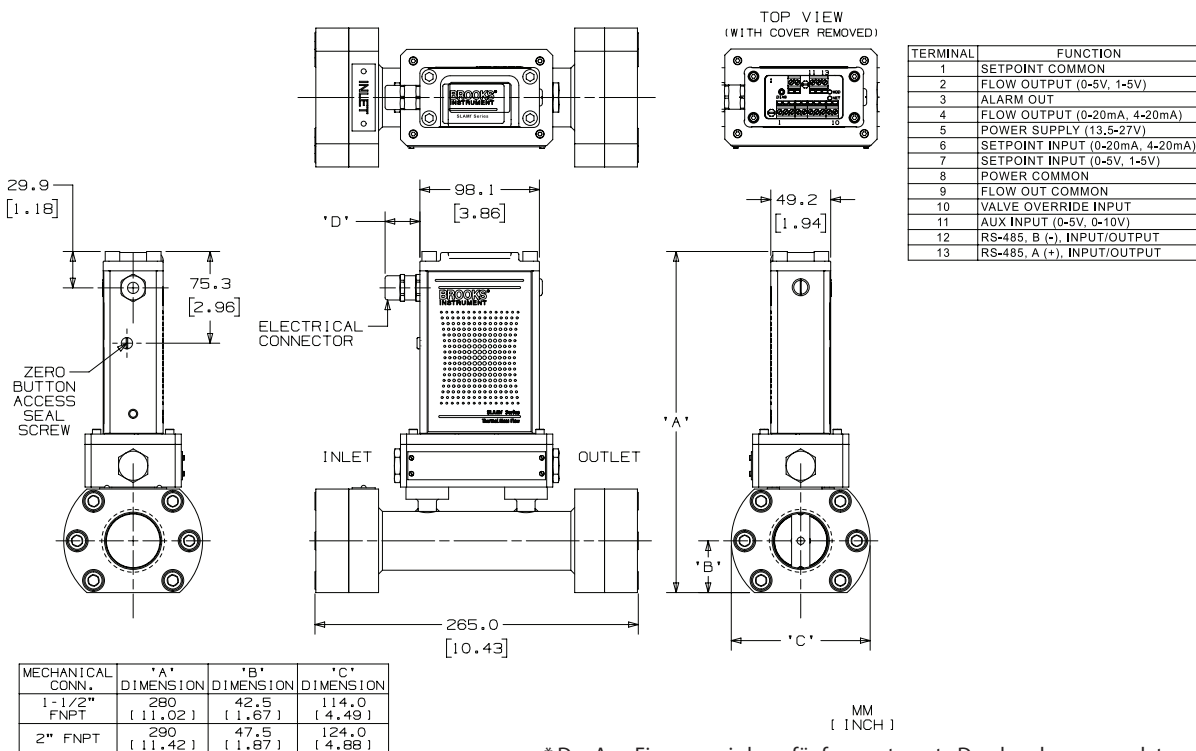
SLAMf63, DeviceNet



* Der Aux-Eingang wird nur für ferngesteuerte Druckregler verwendet.
Weitere Konfigurationen finden Sie in der Bedienungsanleitung.

Best.-Nr.: SLAMf51033B *

SLAMf64, 1-1/2" or 2" FNPT, RS485



* Der Aux-Eingang wird nur für ferngesteuerte Druckregler verwendet.
Weitere Konfigurationen finden Sie in der Bedienungsanleitung.

Best.-Nr.: SLAMf51031C *