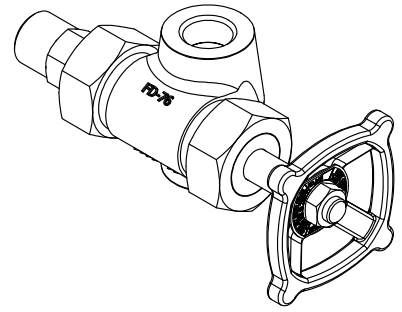


BILL OF MATERIAL (CS BODY/416SS TRIM)					BILL OF MATERIAL (316SS BODY/316SS TRIM)					BILL OF MATERIAL (ALL 316SS)				
NO.	NAME OF PART	QTY.	MATERIAL	SPECIFICATION	NO.	NAME OF PART	QTY.	MATERIAL	SPECIFICATION	NO.	NAME OF PART	QTY.	MATERIAL	SPECIFICATION
1	BODY, BOTTOM VALVE	1	CARBON STEEL	PER ORDER	1	BODY, BOTTOM VALVE	1	316/316LSS	PER ORDER	1	BODY, BOTTOM VALVE	1	316/316LSS	PER ORDER
2	STEM	1	416SS	V11955 U3	2	STEM	1	316/316LSS	V11955 TL2	2	STEM	1	316/316LSS	V11955 TL2
3	TAILPIECE, TANK CONN.	1	LOW TEMP CS	PER ORDER	3	TAILPIECE, TANK CONN.	1	316/316LSS*	PER ORDER	3	TAILPIECE, TANK CONN.	1	316/316LSS*	PER ORDER
4	NUT, TAILPIECE	1	LOW TEMP CS	PER ORDER	4	NUT, TAILPIECE	1	LOW TEMP CS	PER ORDER	4	NUT, TAILPIECE	1	316/316LSS	PER ORDER
5	PACKING RING	1	LOW TEMP CS	P254 1 A32	5	PACKING RING	1	316/316LSS	P254 1 T2	5	PACKING RING	1	316/316LSS	P254 1 T2
6	PACKING	3	CARBON YARN/INCONEL	G259	6	PACKING	3	CARBON YARN/INCONEL	G259	6	PACKING	3	CARBON YARN/INCONEL	G259
7	GLAND	1	LOW TEMP CS	V10167 A32	7	GLAND	1	LOW TEMP CS	V10167 A32	7	GLAND	1	316/316LSS	V10167 T2
8	NUT, GLAND	1	LOW TEMP CS	P70 6 A32	8	NUT, GLAND	1	LOW TEMP CS	P70 6 A32	8	NUT, GLAND	1	316/316LSS	P70 6 T2
9	BALL CHECK	1	440SS	P1 I	9	BALL CHECK	1	316SS	P1 T2	9	BALL CHECK	1	316SS	P1 T2
10	STOP, BALL CHECK	1	316SS	V13113 T	10	STOP, BALL CHECK	1	316SS	V13113 T	10	STOP, BALL CHECK	1	316SS	V13113 T
11	HANDWHEEL	1	CARBON STEEL	PD325 D1	11	HANDWHEEL	1	CARBON STEEL	PD325 D1	11	HANDWHEEL	1	CARBON STEEL	PD325 D1
12	NUT, STEM	1	CARBON STEEL	P78 6 A12	12	NUT, STEM	1	CARBON STEEL	P78 6 A12	12	NUT, STEM	1	316SS	P78 6 T
13	RATING TAG	1	304SS	V22038 2	13	RATING TAG	1	304SS	V22038 2	13	RATING TAG	1	304SS	V22038 2

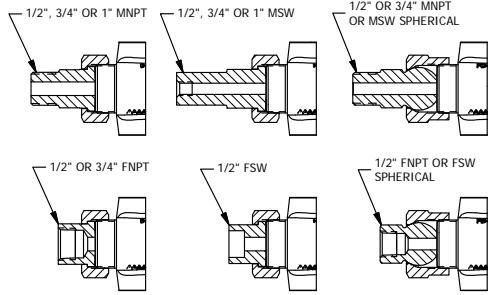
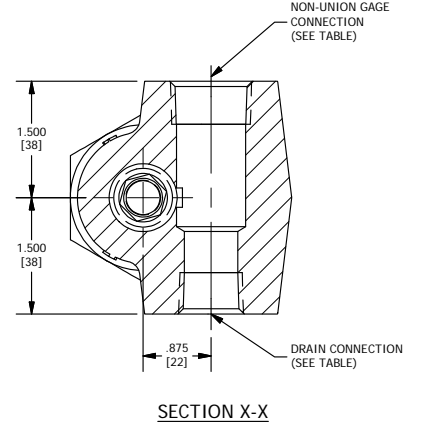
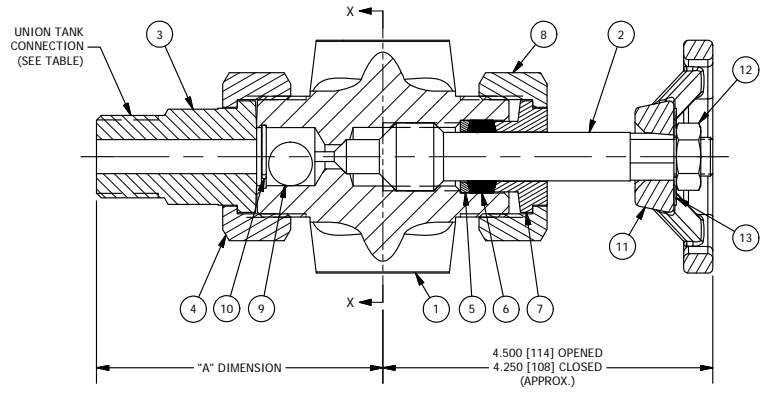


*17-4PHSS FOR SPHERICAL TAILPIECES

*17-4PHSS FOR SPHERICAL TAILPIECES

- NOTES:
- DIMENSIONS IN INCHES W/ mm EQUIVALENTS IN BRACKETS
 - TOP AND BOTTOM VALVES SAME EXCEPT OPPOSITE HANDING (I.E., MIRROR IMAGES) (BOTTOM LEFT HAND VALVE SHOWN)
 - VALVE RATING - CARBON STEEL & 316SS:
2400 PSI @ 100°F, 1323 PSI @ 800°F
(169 KG/CM² @ 38°C, 93 KG/CM² @ 427°C)
 - SEE TABLES FOR AVAILABLE STANDARD CONNECTIONS
 - REFER TO THE FOLLOWING (FOR):
 - CATALOG BULLETIN J100.50 (ADDITIONAL INFORMATION)
 - ION BULLETIN J500.07 (INSTRUCTIONS)
 - VALVE "TRIM" = STEM & BALL CHECK
 - CONSULT FACTORY FOR ALTERNATE MATERIAL OPTIONS

UNION TANK CONNECTION ("A" DIMENSION)									
1/2" MNPT (OR MSW)	1/2" FNPT (OR FSW)	1/2" MNPT SPH. (OR MSW)	1/2" FNPT SPH. (OR FSW)	3/4" MNPT	3/4" MSW	3/4" FNPT	3/4" MNPT SPH. (OR MSW)	1" MNPT (OR MSW)	
3.688 [94]	2.813 [71]	4.313 [110]	3.438 [87]	3.688 [94]	4.500 [114]	2.813 [71]	4.313 [110]	4.125 [105]	
GAGE, VENT / DRAIN CONNECTION									
1/2" OR 3/4" FNPT (OR FSW) ONLY									



TANK CONNECTION
(3/4" FSW UNION CONNECTION NOT AVAILIABLE AS STANDARD)

REV	DATE	REVISION	BY
2	10/25/2019	CHANGED PACKING MATERIAL FROM GRAPHITE/NICR	JJK
1	2/22/2018	UPDATE BOM	JLI

MANUFACTURED BY
Clark-Reliance®
 16633 FOLTZ PARKWAY
 STRONGSVILLE, OH 44149 USA
 (440) 572-1500 | www.clarkreliance.com
 © Clark-Reliance® Corporation. All Rights Reserved.

JERGUSON®
 #146 OFFSET VALVE (PLAIN-CLOSING)
 UNION TANK CONNECTION
 NON-UNION GAGE CONNECTION

DRAWN: DDenk	REV: 2
CHECKED: MK	
DATE: 7/8/2013	
REVISION: 2	
DRAWING NO.: 146	